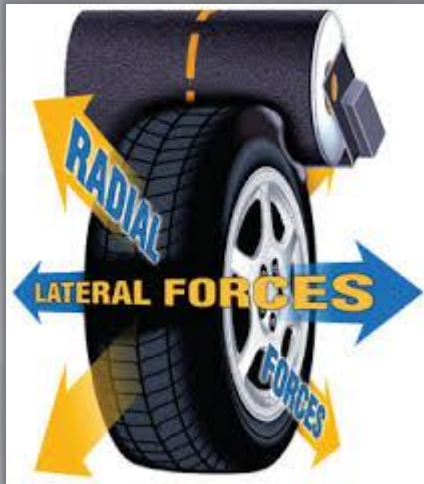


Road Force Wheel Balancing



We use Road Force Balancing which solves vibration problems other balancing cannot solve.

Tire Brands

We offer most major brands of tires, including:

Dunlop, Kumho, Mastercraft, Sigma, BF Goodrich, Falken, Firestone, Michelin, Bridgestone, Fuzion, Toyo, Continental, Goodride, Cooper, Goodyear, Nankang, Uniroyal, Cordovan, Greenball, Nexen, Pirelli, Kenda, Hankook, Kelly, Yokohama, CountryWide Spec., Guardian, Payload, Westlake, Cultor, Crop Max, Radar, Deestone, Delinte, OGreen Commercial Tire, Nokian Tires, Advanta, Republic, American Farmer, Kyle Spec, Longmarch, Retreads, American Omni, Eldorado, Maxxis, Sutong, BKT, TBC Neutral, Mitas TireCo, Spec. Tubes, Wanli, Wheels, Carlisle, Genera, and MultiMile

Contact Us

**HIGHLY TRAINED CERTIFIED
A.S.E. TECHNICIAN**
waiting here to serve YOU!



**WALK-INS AND
EMERGENCIES ACCEPTED**

Johnson Automotive Service & Repair

Larry Johnson, Master Tech & Owner
601 W. Oak St.
Fairbury, IL 61739

Shop phone: (815) 692-4015

Cell phone: (815) 848-3989

**Visit our website for more
helpful information about
servicing your vehicle**

JohnsonAutomotiveServices.com

**Johnson
Automotive**
Repair & Service
815-692-4015

JohnsonAutomotiveService.com

All About Tires



Why Choose Us?

Johnson Automotive employs qualified ASE-certified technicians since 2010. We service our community's automobiles with integrity, expertise, and professionalism. We invest in the latest technology, scanners, and diagnostic software and continue to service even the newest car models.

Being family-owned, we don't just fix your car, we care about the comfort and safety of you and your family!

N2

**Level2
Charge
Station**

**Remote
Starters**

**Wheel
Alignment**

**Heating &
A/C**

Brakes

**Repairs for
Every Budget**

**23-Hour
Towing**

**Complete
Auto Care**

When Is It Time For New Tires?

6/32"+ No need to replace

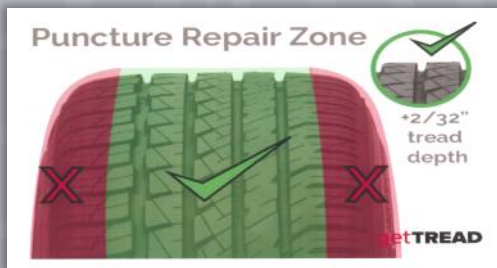
5/32"- 4/32" Consider replacing

3/32" or less Replace

Maintenance

Proper maintenance and responsible driving can maximize the mileage in a set of tires. Tires are also a very important safety feature on your vehicle, using life-saving technologies like antilock brakes and electronic stability control. Johnson Automotive has the equipment to service your tire systems.

- * Rotate Every 5,000 miles
- * Balance Every 10,000 miles
- * Valve Stem
- * TPMS Service Pack
- * Nitrogen
- * Patch Plug Repair
- * MAP Repair Guidelines
- * Ask about our Tire Service Plan



ADAS

We offer every customer the peace of mind knowing we checked and re-checked the Advanced Driver Assistance Systems (ADAS) of the vehicle. Our ADAS Calibration services include systems in the car, such as:

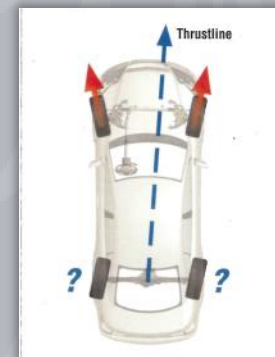
- * Automatic emergency braking
- * Lane departure warning
- * Adaptive cruise control
- * Blind spot monitoring
- * Forward collision warning
- * Automatic headlight high-beam activation and dimming
- * Parking assist/self-parking
- * Steering cycle and more



WHY WHEEL ALIGNMENTS?

- * Reduce tire wear
- * Get better gas mileage
- * Improve handling
- * Enhance driving safety

Wheel alignment (or simply alignment) is standard car maintenance that involves adjusting the angles of the wheels so that they are set to the manufacturer's specifications. The main purpose is to let the suspension and the steering systems operate at their desired angles. Alignment is a complicated process and not all mechanics get it right. To have experts handle your car's alignment, visit Johnson Automotive.



Contact us for your Tire needs! (815) 692-4015